



SCAN TO GET MORE!

ENJOY EXCLUSIVE BENEFITS IN ONLY SECONDS

We're now including something extra with the majority of FP DIESEL® parts – a unique QR code!

By simply scanning the QR code with a smartphone's camera, you can access all you need to know about the product and even learn new skills that will last a lifetime.

THE REAL DEAL!

Scan the code and it gives you the instant peace-of-mind that the product is a genuine FP DIESEL® part.



EXTENSIVE PRODUCT DETAILS AT YOUR FINGERTIPS

The QR code also provides access to:

- Product part number, specification and applications
- Warranty conditions
- After sales support
- Direct email for Garage Gurus technical experts

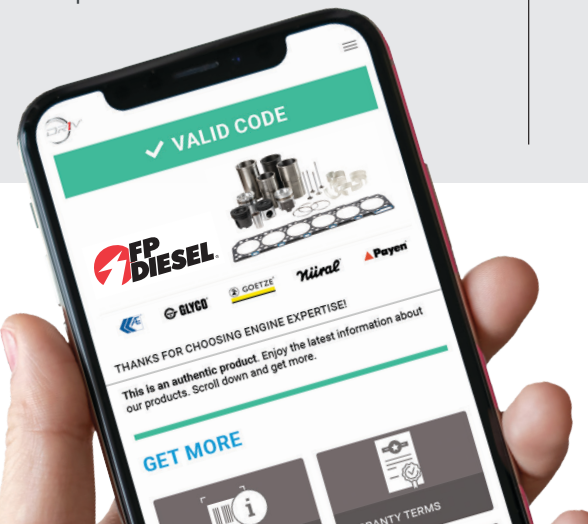
UPDATE YOUR TECHNICAL KNOWLEDGE FOR FREE

Scan the QR code and you can enhance your technical skills for free by enrolling in Gurus+, our all-access training platform. Once you've spent a couple of minutes registering, you then enjoy a host of training-based benefits, including:

- E-learning course library
- Webinars
- Brand information



More info: garagegurus.tech

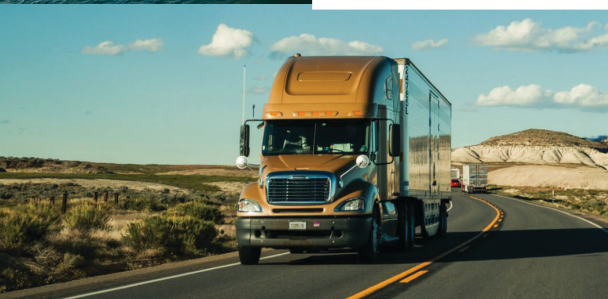
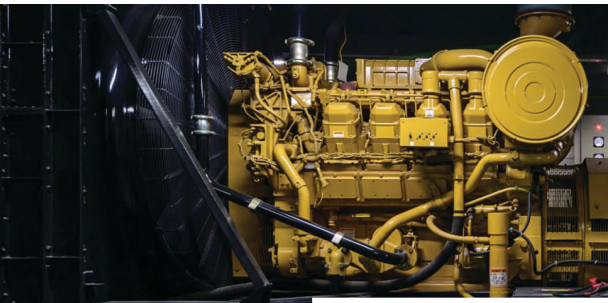


IF YOU SEE THE QR CODE, SCAN IT. IT'S AS ESSENTIAL AS HAVING THE RIGHT TOOLS FOR THE JOB!



TOUGH PARTS FOR A TOUGH WORLD





POWER GENERATION

FP Diesel parts are precision-engineered to meet the most demanding specifications. They're designed and tested to withstand brutal operating environments. And they're proven to perform no matter where they go.

CONSTRUCTION & MINING

Construction and mining equipment demands engine components that deliver the reliability needed to stay productive in the harshest conditions. From rugged job sites to remote mining operations, FP Diesel parts are built for extreme durability and consistent output.

AGRICULTURE

Nothing works harder than agricultural equipment. So when you need to service an agricultural engine used in the field, install equally hardworking components: FP Diesel.

MARINE

Marine technology needs reliable parts to work well in a harsh maritime environment. To make these parts, FP Diesel uses the most appropriate materials and techniques to keep them in optimal condition. This helps marine equipment work better and last longer.

HD TRUCKS

Heavy-duty trucks face grueling conditions—long miles, rough roads and constant stop-and-go demands. FP Diesel supplies engine components engineered for lasting durability and reliable performance to keep hardworking vehicles on the road and on schedule.

OIL & GAS

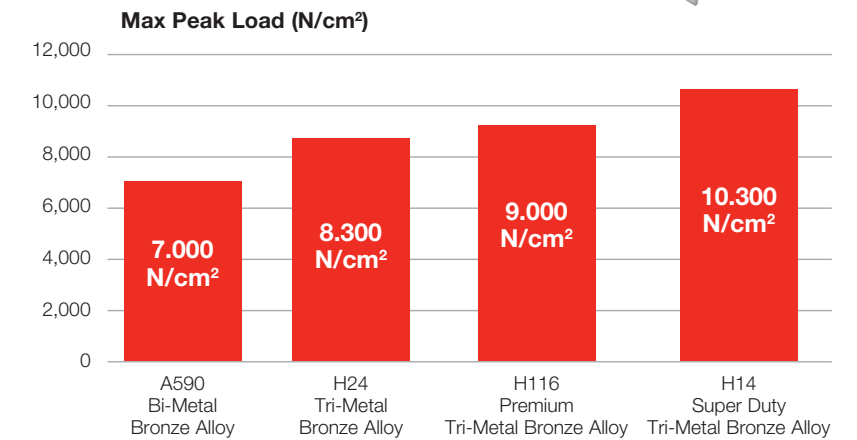
From drilling sites to refineries, oil and gas operations demand engine components with uncompromising reliability. Built from rugged materials and crafted with precision, FP Diesel engine parts keep critical equipment running and production on track.

BEARINGS



Rebuilders can trust FP Diesel engine bearings to ensure performance and longevity of their engines.

Bearing materials vary widely in terms of rate of wear and fatigue strength, which is crucial in engines operating under high loads and considerable heat. DRiV has performed the research necessary to identify the right solution for each engine.



IN-FRAME & OVERHAUL KITS



FP Diesel engine kits make it simple to extend an engine's life. Whether you are performing a complete overhaul or an in-frame repair, FP Diesel allows you to select a kit tailored to the job at hand. Overhaul kits give you every component, each precision-engineered and precision-matched for the job.

This comprehensive program also provides concise application information, a full range of bearing oversizes and undersizes, and complete overhaul kits that include full gasket sets. Plus FP Diesel-quality throughout.

FP DIESEL® PISTONS



Articulated pistons

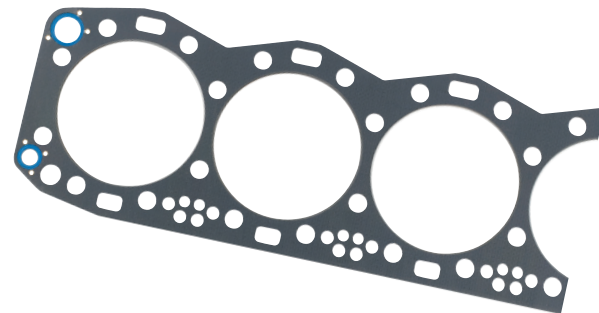
POWERFORGED® pistons

FP Diesel pistons are proven to be a better and more efficient replacement piston in today's hardest-working engines.

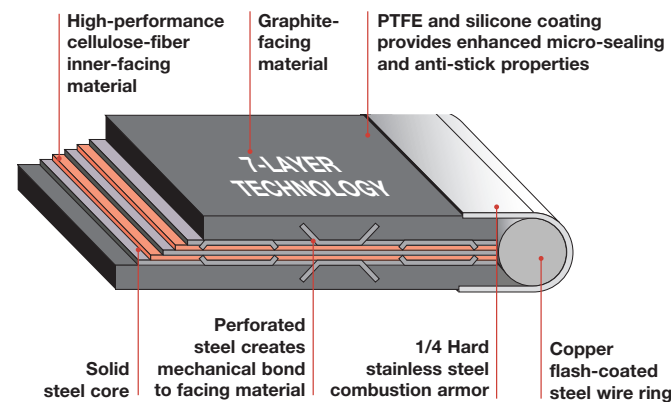
FP Diesel Articulated and POWERFORGED® pistons feature advanced engineering innovations that vastly improve cooling by circulating fresh oil nonstop to the piston crown, proprietary high-strength materials, and exclusive manganese coatings that improve performance and reduce scuffing.

ML7™ HEAD GASKETS

The FP Diesel ML7™ gasket's innovative multi-layer-core design enables it to withstand significantly higher combustion pressures and temperatures, and accommodate vertical and lateral motion between the block and cylinder head.



The seven-layer technology incorporates a steel core, ensuring optimal compressed thickness control and a more solid and durable gasket that eliminates the concerns of repeat sealing issues in high-output applications.



CYLINDER KITS

FP Diesel cylinder kits contain all the parts needed to repair a single cylinder. Each component is designed and manufactured to work together as part of the "Power Cylinder" system.

For the best performance, always install FP Diesel pistons, pin & retainers, liners & seals, and rings together to ensure an optimal fit, form and function.



VALVES AND VALVETRAIN PARTS



Today's emission-compliant engines put added strain on valvetrain components. FP Diesel is a global leader in engine valves, guides and seats, and we have access to the latest specialty alloys needed to survive in this challenging environment.

We offer a complete range of valves and valvetrain parts needed to get cylinder heads back into a top operating condition.

PISTON RINGS

FP Diesel offers a broad range of piston rings that dominate the industry with technically advanced design, dedicated research and superior quality.

Our piston rings are manufactured from a selection of the best materials and coatings, including chrome, plasma and nitriding.

These designs improve break-in, reduce scuffing and oil consumption, and provide corrosion resistance in the most severe operational environments.



TURBOCHARGERS



Engineered for durability and precision, FP Diesel turbochargers play a critical role in heavy-duty engine performance. Delivering increased power output without sacrificing fuel efficiency, they help engines achieve greater torque, improved responsiveness and optimized performance under load.

Whether powering trucks, construction machinery or industrial equipment, FP Diesel turbochargers help equipment operate reliably in demanding conditions like steep grades, high altitudes and extreme temperatures. Count on FP Diesel to maximize output while minimizing downtime.

CYLINDER LINERS

FP Diesel cylinder liners are manufactured using the best suitable materials for the job. Cast iron, ductile iron and steel are used, and flanges are rolled for increased strength. Induction-hardening and nitriding are applied as needed to meet the demands of the application.

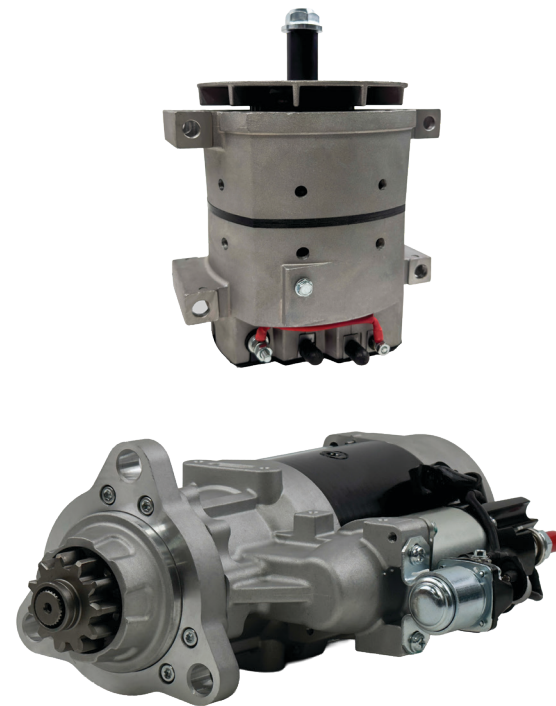
Cylinder liner seal rings are critical to performance, and we use high-quality premium polymers formulated to resist heat, corrosion and dynamic forces found in the power cylinder.



ALTERNATORS/STARTERS

FP Diesel alternators and starters are built to keep commercial vehicles moving—day after day, mile after mile. FP Diesel alternators provide steady output to support demanding onboard systems while our starters deliver reliable cranking power to get engines running, even in the harshest conditions.

Engineered for durability, high performance and minimal maintenance, FP Diesel components power everything from trucks and construction equipment to industrial machinery. From cold starts to long hauls, count on FP Diesel alternators and starters to drive your heavy-duty engines forward.



YOUR ONE-STOP SOURCE FOR ENGINE PARTS

We offer a one-stop shop for engine parts through our **FP Diesel** program. We are proud to say that this expertise extends to heavy-duty engines, enabling us to offer a complete portfolio of products to meet the needs of engine rebuilders.

DRiV (Tenneco) offers **market-leading coverage and OE technologies**, supported by our dedicated **New Parts Introduction (NPI)** program.

Our entire range continues to evolve and improve, maintaining our reputation for quality parts.